



JANZ

a SIT company

ABOUT US

JANZ is part of the SIT group, an Italian multinational group that has more than 2000 people, distributed by factories, subsidiaries, sales offices and agencies around the world. This international workforce represents a guarantee of competence for customers around the world.

SIT IN NUMBERS

€ 370 MILLION
Turnover

MORE THAN 2000
Employees

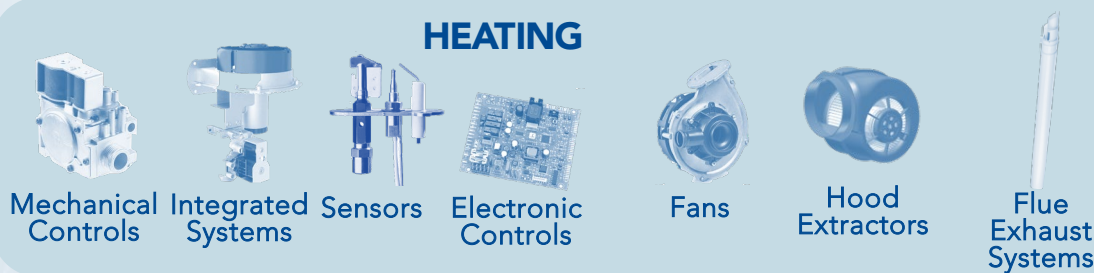
€ 11 MILLION
Investment in
R&D

100 000 m²
infrastructures

ABOUT US



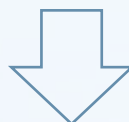
HEATING



DOMESTIC APPLIANCES



PROFESSIONAL COOKING AND CATERING



- Commercial ovens
- Fryers
- Hoods



SMART GAS METERING



Smart Grid



SMART WATER METERING



Smart City

ABOUT US

SIT GROUP: VISION AND MISSION

MISSION

Create smart solutions for climate control and consumption measurement for a more sustainable world.

VISION

***To be recognized as the leading sustainable partner in energy and climate control solutions.
And enjoy the journey!***



Organization



● Sales Offices 🏭 Production Plants ■ Agents/Distributors ▲ R&D centres
— Heating — Gas Metering — Water Metering

1

ABOUT US

For over 100 years innovating in the water measurement sector

2

OUR SERVICES

We manufacture, market and distribute water meters, precision parts and plastic injection.

3

CERTIFICACIONES

The JANZ quality process is part of our culture and values

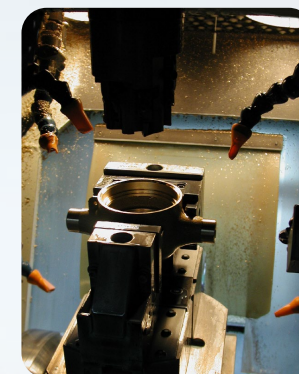
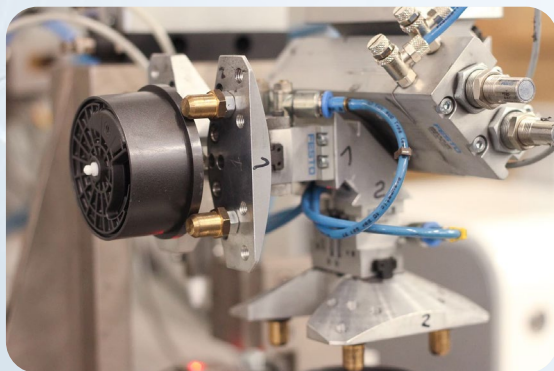
4

PRODUCT RANGE

Discover our water meters portfolio

ABOUT US

- JANZ has been dedicated, since 1915, to developing solutions for the water management market.
- Made up of a team with more than 250 employees, a total infrastructure of 11,000 m² and a century-old experience, JANZ is the only peninsular company with fully integrated manufacturing and development capacity, with a production capacity of more than 400,000 meters per year.
- In a highly competitive market, we seek daily to offer innovative solutions adapted to the measurement of water.
- JANZ has always bet on the quality and longevity of our products.
- Created in 1999, Conthidra, located in Seville, is the company responsible for developing the business in the Spanish market and in the LATAM countries.





[illegible]

Know more...

Know more...

Know more...

Know more...

Know more...

Certificate of Accreditation M004
Know more...





PRODUCT RANGE



**RESIDENTIAL
DN13-DN20**



**COMMERCIAL
DN25-DN40**



**INDUSTRIAL
DN50-DN200**



**SMART WATER
METERING**

The JANZ water meters are developed to accomplish the highest performance standards in compliance with OIML-R49.

COMMUNICATION

All JANZ water meters are pre-equipped with inductive pulse output with configurable pulse/litre. Ready for the most advanced IoT (Internet of Things) communication technologies.

RESISTANCE

Its design and engineering along with the highly detailed selection of materials guarantees an ideal balance between sensitivity and durability.

PRODUCT RANGE
RESIDENTIAL

VOLUMETRIC



JV400
DN15-DN20



JV600
DN15-DN20

SINGLE-JET



JM300
DN13-DN20



COMBI
DN13-DN20

MULTI-JET



JT200
DN15-DN20

PRODUCT RANGE

RESIDENTIAL | VOLUMETRIC

INDICATOR DEVICE

- Anti-fraud alert system
- Does not have immersed mechanisms and has large high contrast rollers.
- Protection index IP68 prevents condensation.
- Copper and glass totalizer option for extreme conditions.

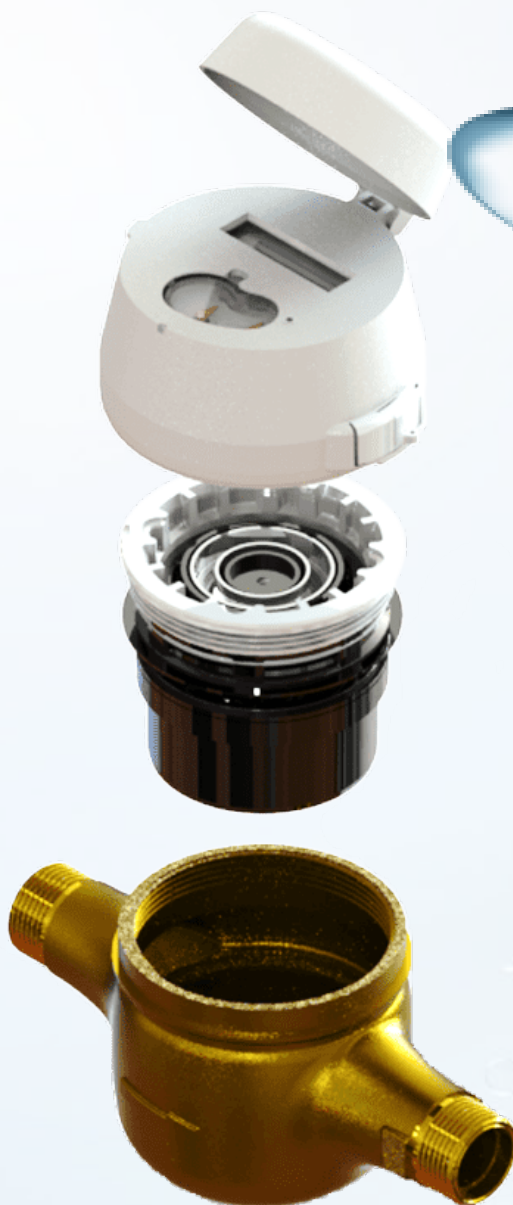
MAGNETIC TRANSMISSION

Designed to reduce the number of mechanisms and components immersed in water, increasing the product's longevity and protecting it from external influences.

VOLUMETRIC CHAMBER

With a lower filter that prevents its blockage due to the influence of retention of suspended particles.

[Read Data Sheet](#)



JV400

DN15 to DN20

Q3=2,5 to Q3=4 m³/h | R800 | T50 | MAP16

- Starting flow below 1.0 L/h.
- Within the maximum permissible error (+/- 5%) below 3.0 L/h (R800).
- Effective protection against external influences.
- Measurement accuracy from flow rates below the standard minimum to maximum flow rates.
- Excellent performance on sudden starts.
- A 45° register version is also available.

MEASURING ELEMENT

Its technology guarantees that the accuracy curve of the meter is maintained over its service life.

BODY

High quality brass alloy.



MAGNETIC
TRANSMISSION



TEMPERATURE
UP TO 50°



COLD WATER
UP TO 30°



IoT
READY



PRODUCT RANGE

RESIDENTIAL | VOLUMETRIC

INDICATOR DEVICE

- Anti-fraud alert system
- It can have a reading resolution of 0.02.
- Does not have immersed mechanisms and has large high contrast rollers.
- In order to achieve an adequate reading position the totalizer can rotate 360°.
- Protection index IP68 prevents condensation.
- For applications in extreme conditions a Super-dry (copper housing and glass tap) version is also available.

MAGNETIC TRANSMISSION

Designed to reduce the number of mechanisms and components immersed in water, increasing the product's longevity and protecting it from external influences.

VOLUMETRIC CHAMBER

With a lower filter that prevents its blockage due to the influence of retention of suspended particles.

[READ DATA SHEET](#)



JV600

DN15 to DN20
Q3=2,5 a Q3=4 m³/h | R800 | T50 |
MAP 16

- Within the maximum permissible error (+/- 5%) below 3.0 L/h (R800).
- Starting flow below 1.0 L/h.
- Measurement accuracy from flow rates below the standard minimum to maximum flow rates

PRECISION CURVE THROUGHOUT THE WORKING LIFE

- Excellent precision along the entire curve due to the technology used in the volumetric chamber.
- Enorme capacidade de absorção da vibração proporcionando baixo nível de ruído.

BODY

Composite body with high mechanical strength.



MAGNETIC
TRANSMISSION



TEMPERATURE
UP TO 50°



COLD WATER
UP TO 30°



IoT
READY

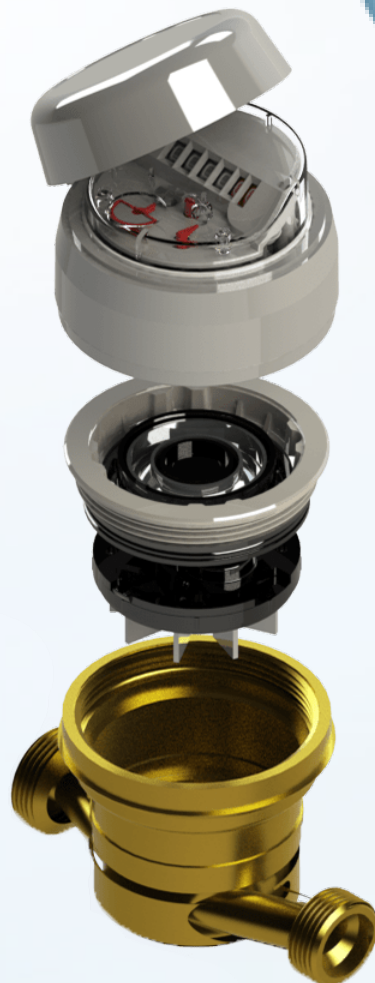


PRODUCT RANGE

RESIDENTIAL | SINGLE-JET

INDICATOR DEVICE

- Anti-fraud alert system
- It can have a reading resolution of 0.02.
- Does not have immersed mechanisms and has large high contrast rollers.
- In order to achieve an adequate reading position the totalizer can rotate 360°.
- Protection index IP68 prevents condensation.
- For applications in extreme conditions a Super-dry (copper housing and glass tap) version is also available.



JM300

DN13 to DN20

Q3=2,5 a Q3=4 m³/h | R200 | T50 | MAP 16

- Recommended for plumbing with high level of floating suspension particles.
- For domestic consumption measurement.
- A 45° register version is also available.

MEASURING ELEMENT

- It is the only moving part in contact with water.
- Double sapphire support for longer life of the device.
- High measuring accuracy.

BODY

- High quality hot-stamped brass alloy.
- Compliant with DIN17660.



[Read Data Sheet](#)



MAGNETIC
TRANSMISSION



TEMPERATURE
UP TO 50°



COLD WATER
UP TO 30°



IoT
READY

PRODUCT RANGE

RESIDENTIAL | SINGLE-JET

INDICATOR DEVICE

- Anti-fraud alert system
- It can have a reading resolution of 0.05.
- Does not have immersed mechanisms and has large high contrast rollers.
- In order to achieve an adequate reading position the totalizer can rotate 360°.
- Protection index IP68 prevents condensation.

MAGNETIC TRANSMISSION

Designed to reduce the number of mechanisms and components immersed in water, increasing the product's longevity and protecting it from external influences.

COMBI



DN13 to DN20

Q3=2,5 a Q3=4 m³/h | R125 | T50 | MAP 16

- For household consumption metering.
- Recommended for installations with high levels of particles in suspension.
- A 45° register version is also.

TURBINE

- It is the only moving part in contact with water.
- Double sapphire support for longer life of the device.
- High measuring accuracy.

BODY

- High quality hot-stamped brass alloy.
- Compliant with DIN17660.



[Read Data Sheet](#)



MAGNETIC
TRANSMISSION



TEMPERATURE
UP TO 50°



COLD WATER
UP TO 30°



IoT
READY

PRODUCT RANGE

RESIDENTIAL | MULTI-JET

INDICATOR DEVICE

- Anti-fraud alert system.
- 0.02 reading resolution.
- Does not have immersed mechanisms and has large high contrast rollers.
- In order to achieve an adequate reading position the totalizer can rotate 360°.
- Protection index IP68 prevents condensation.
- For applications in extreme conditions a Super-dry (copper housing and glass tap) version is also available.

MINIMUM MAINTENANCE COSTS

A filter placed at the entrance allows easy cleaning, minimizing maintenance costs and allowing the equipment to be preserved.



JT200

DN15 to DN20

Q3=2,5 to Q3=4 m³/h | R80 | T50 | MAP 16

- Recommended for household consumption metering in installations with high level of particles in suspension.
- Excellent performance on sudden starts.
- A 45° register version is also available.

MEASURING ELEMENT

- It is the only moving part in contact with water.
- Minimal wear during operation even in contact with damaged plumbing.
- Immune to the influence of suspended particles.
- High measuring accuracy.

BODY

High quality brass alloy.



MAGNETIC
TRANSMISSION



TEMPERATURE
UP TO 50°



COLD WATER
UP TO 30°



IoT
READY

PRODUCT RANGE

RESIDENTIAL | MULTI-JET

INDICATOR DEVICE

- Anti-fraud alert system.
- 0.02 reading resolution.
- Does not have immersed mechanisms and has large high contrast rollers.
- In order to achieve an adequate reading position the totalizer can rotate 360°.
- Protection index IP68 prevents condensation.
- For applications in extreme conditions a Super-dry (copper housing and glass tap) version is also available.

MINIMUM MAINTENANCE COSTS

A filter placed at the entrance allows easy cleaning, minimizing maintenance costs and allowing the equipment to be preserved.



JT250

DN15

Q3=2,5 | R100 | T50 | MAP 16

- Recommended for household consumption metering in installations with high level of particles in suspension.
- Excellent performance on sudden starts.

MEASURING ELEMENT

- It is the only moving part in contact with water.
- Minimal wear during operation even in contact with damaged plumbing.
- Immune to the influence of suspended particles.
- High measuring accuracy.

BODY

Composite.



MAGNETIC
TRANSMISSION



TEMPERATURE
UP TO 50°



COLD WATER
UP TO 30°



PRODUCT RANGE COMMERCIAL

VOLUMETRIC



JV400
DN25-DN40



JV600
DN25

MULTI-JET



MST
DN25-DN40

PRODUCT RANGE

COMMERCIAL | VOLUMETRIC

INDICATOR DEVICE

- Anti-fraud alert system.
- Does not have immersed mechanisms and has large high contrast rollers.
- Register with 360° rotation.
- Protection index IP68 prevents condensation.
- For applications in extreme conditions a Super-dry (copper housing and glass tap) version is also available.

MAGNETIC TRANSMISSION

Designed to reduce the number of mechanisms and components immersed in water, increasing the product's longevity and protecting it from external influences.

VOLUMETRIC CHAMBER

With a lower filter that prevents its blockage due to the influence of retention of suspended particles...



JV400



DN25 to DN40

Q3=6,3 to Q3=16 m³/h | R800 | T50 | MAP 16

- High performance at low flow rates.
- Effective protection against external influences.
- Exactness from flowrates under the minimum standardized up to the maximum flowrate.
- Excellent performance on sudden starts.
- A 45° register version is also available.

MEASURING ELEMENT

Its technology guarantees that the accuracy curve of the meter is maintained over its service life.

BODY

High quality brass alloy.

[Read Data Sheet](#)



**MAGNETIC
TRANSMISSION**



**TEMPERATURE
UP TO 50°**



**COLD WATER
UP TO 30°**



**IoT
READY**

PRODUCT RANGE

COMMERCIAL | VOLUMETRIC

INDICATOR DEVICE

- Anti-fraud alert system
- It can have a reading resolution of 0.02.
- Does not have immersed mechanisms and has large high contrast rollers.
- In order to achieve an adequate reading position the totalizer can rotate 360°.
- Protection index IP68 prevents condensation.
- For applications in extreme conditions a Super-dry (copper housing and glass tap) version is also available.

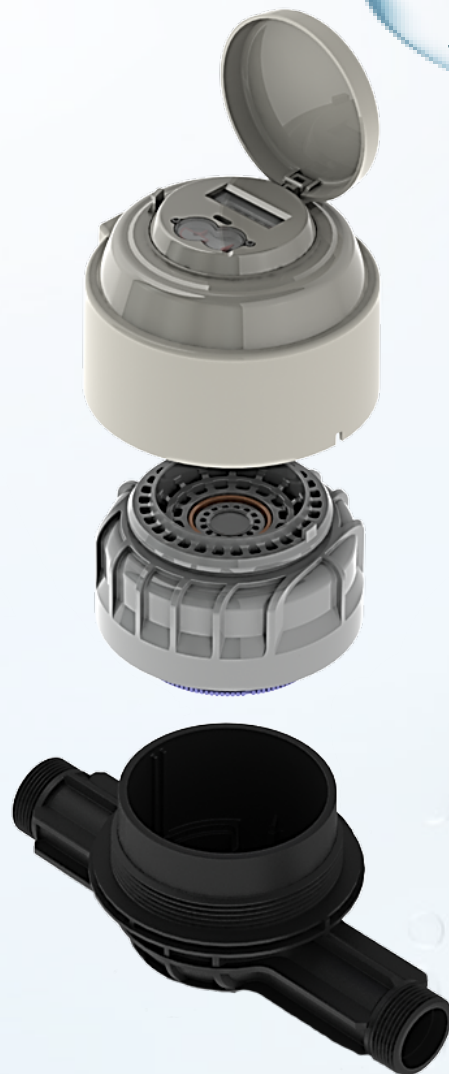
MAGNETIC TRANSMISSION

Designed to reduce the number of mechanisms and components immersed in water, increasing the product's longevity and protecting it from external influences.

VOLUMETRIC CHAMBER

With a lower filter that prevents its blockage due to the influence of retention of suspended particles..

[Read Data Sheet](#)



JV600

DN25

Q3=6,3 m³/h | R800 | T50 | MAP 16

- Excellent precision along the entire curve due to the technology used in the volumetric chamber.
- High performance at low flow rates. Exactness from flowrates under the minimum standardized up to the maximum flowrate.

PRECISION CURVE THROUGHOUT THE WORKING LIFE

- Its technology guarantees that the accuracy curve of the meter is maintained over its service life.
- It allows the retention of suspended particles.
- Huge vibration absorption capability providing low noise level.

BODY

Composite body with high mechanical strength.



MAGNETIC
TRANSMISSION



TEMPERATURE
UP TO 50°



COLD WATER
UP TO 30°



IoT
READY



PRODUCT RANGE

COMMERCIAL | MULTI-JET

INDICATOR DEVICE

- 0.02 or 0.2 reading resolution.
- Does not have immersed mechanisms and has large high contrast rollers.
- In order to achieve an adequate reading position the totalizer can rotate 360°.
- Protection index IP68 prevents condensation.
- For applications in extreme conditions a Super-dry (copper housing and glass tap) version is also available.

PROTECTION AGAINST EXTERNAL INFLUENCES

The magnetic coupling conception reduces the number of components working in t water largely upgrading the reliability of the product.



MST



DN25 to DN40

Q3=6,3 to Q3=16 m³/h | R100 | T50 | MAP 16

- Recommended for installations with high levels of suspended particles.
- Excellent performance on sudden starts.
- Can be safely used for temperatures around 50°C.

TURBINE

- Being the only moving part inside water was produced with the most advanced materials and the most accurate procedures.

MINIMUM WEAR

Its design ensures a minimum wear during operation even in not so clean water.

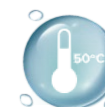
BODY

High quality brass alloy.

[Read Data Sheet](#)



MAGNETIC
TRANSMISSION



TEMPERATURE
UP TO 50°



COLD WATER
UP TO 30°



IoT
READY



PRODUCT RANGE

INDUSTRIAL

MULTI-JET



**MST
DN50**

ULTRASONIC



**JU500
DN50-DN200**

PRODUCT RANGE

INDUSTRIAL | MULTI-JET

INDICATOR DEVICE

- 0.02 or 0.2 reading resolution.
- Does not have immersed mechanisms and has large high contrast rollers.
- In order to achieve an adequate reading position the totalizer can rotate 360°.
- Protection index IP68 prevents condensation.
- For applications in extreme conditions a Super-dry (copper housing and glass tap) version is also available.

PROTECTION AGAINST EXTERNAL INFLUENCES

The magnetic coupling conception reduces the number of components working in the water largely upgrading the reliability of the product.

[Read Data Sheet](#)



MST

DN50

Q3=25m³/h | R100 | T50 | MAP 16

- Recommended for installations with high levels of suspended particles.
- Excellent performance on sudden starts.
- Can be safely used for temperatures around 50°C.

TURBINE

- Being the only moving part inside water was produced with the most advanced materials and the most accurate procedures.

MINIMUM WEAR

Its design ensures a minimum wear during operation even in not so clean water.

BODY

High quality brass alloy.



MAGNETIC
TRANSMISSION



TEMPERATURE
UP TO 50°



COLD WATER
UP TO 30°



IoT
READY





PRODUCT RANGE

INDUSTRIAL | ULTRASONIC

INDICATOR DEVICE

Different symbols are displayed on the LCD in sequence mode presenting all kinds of information namely: accumulated volume, instant flow, accumulated reverse flow, etc.

HIGHEST MEASUREMENT ACCURACY

Its robust construction and absence of internal moving parts make the JU500 a highly reliable meter that can withstand the most demanding working conditions, to ensure the highest measurement accuracy throughout its life.

BODY

Cast iron with epoxy coating, suitable for very demanding working conditions..



JU500

DN50 to DN200

Q3=40 to Q3=400m³/h | R500 | T50 | MAP16



- Static ultrasonic meter for accurate and reliable measurement for control of large consumption and performance monitoring in large distribution networks.
- Highly robust construction and absence of internal moving parts.
- LCD display with IP68 protection.
- 10 digits and various status indicators.
- Totalized volume indication, instantaneous flow and alarms

SENSITIVITY TO LOW FLOW RATES

- It has four transducers positioned face-to-face inside the measuring tube in each of the two parallel channels of the device.
- High sensitivity to low flow rates, greater accuracy in monitoring and performance in large distribution networks.

[Read Data Sheet](#)



ULTRASSONIC



TEMPERATURE
UP TO 50°



COLD WATER
UP TO 30°



IoT
READY



PRODUCT RANGE

SMART WATER METERING

PULSE SENSOR



RADIO



PRODUCT RANGE

SMART WATER METERING | PULSE SENSOR

COMPATIBILITY

- Direct coupling with the full range of Janz meters. Compatible with any meter with pulse output. Water flow direction detection capability, ensuring full synchronization between conventional mechanical reading and the data transmitted through remote reading systems.

SIGNAL OUTPUT

- Signal Type: DC
- Maximum Voltage (V.Max): 28V
- Minimum Voltage (V.Min): 3V
- Maximum Current (I.Min): 20 mA
- Line polarization: Yes

CONNECTION

- Pulse output: White
- GND: Brown
- Equipment removal alarm: Green
- Flow Direction: Yellow



JI

COMPATIBLE WITH ALL JANZ METERS | INDUCTIVE | CONFIGURABLE

- Flow direction detection capability.
- Ensures synchronized mechanical reading and transmitted data.
- Immune to external interference.
- Ability to adapt to a data logger or to any device with "open collector" type digital input that works with the schemes described in the data sheet.

INDUCTIVE PULSE

- NPN transistor with open collector
- Unidirectional | Bidirectional
- Configurable Pulses
- Pulse Width: 32 ms
- Maximum Frequency: 5 Hz
- Active (low / high): Low

[Read Data Sheet](#)



IP68



10 YEARS



REVERSE FLOW
DETECTION

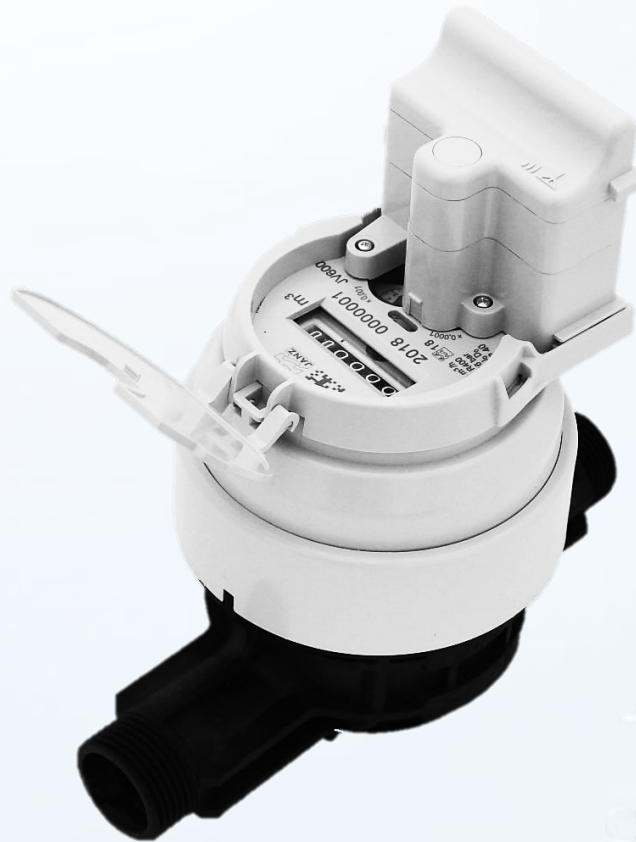


PERMANENT
SYNCHRONISM



PRODUCT RANGE

SMART WATER METERING | RADIO



[Read Data Sheet](#)

MYWATER

LPWA CONNECTION | LONG RANGE | LOW CONSUMPTION | UP TO 15 YEARS LIFE | UP TO 96 DAILY READINGS

Telemetry solution enabling two-way and human-free interaction with any equipment or information system, making a major contribution to greater efficiency in the management of meter resources, lower running costs and a significant increase in the level of service provided to the final customer.

MYWATER relies on its state-of-the-art LPWA (Low Power Wide Area) networking technology to deliver ease of deployment, scalability and reliability.

- Long range and low consumption
- High "Deep Indoor" coverage
- Guaranteed data security
- Available for SIGFOX; LoRa; NB-IoT and WM-Bus networks

EQUIPMENT

MYWATER's simple architecture dispenses with intermediate network devices, such as concentrators or repeaters, and dedicated and complex network infrastructures.

- meter + radio module + IoT (Internet of Things) network + Communication Interface
- Non-Replaceable Internal Battery
- IP68- Standard profile
- 12 to 15 years- Extreme Profile - 6 to 8 years



INNOVATION



SCALABLE



RELIABLE




SIMPLE

MYWATER,
GOING **BIG**



REVOLUTION
IS HERE,
ARE YOU?





The number of Internet-connected sensors
and devices is expected to exceed

20billion
by 2020





IoT connections could

exceed 4x
the number of people
on the planet





The only
comparable
time to this
is the
industrial revolution

A large flock of sheep is shown in a field. In the foreground, a single sheep is colored a vibrant blue, standing out from the rest of the white flock. The sheep are looking in various directions, some towards the camera. The background is a dark, solid blue gradient.

LEADING THE PACK

OR
JUST KEEPING UP





The first-movers
"advantage"

A large, stylized water droplet is the central focus, rendered in a translucent blue color. It sits on a surface of water, creating concentric ripples that spread outwards. The background is a dark blue gradient, overlaid with a faint, vertical pattern of white binary code (0s and 1s).

MYWATER

IoT'S SUCCESS KEY

IN THE

WATER SECTOR



MYWATER



Innovation

*Customer independence
in the management of water meters*





Scalable

Tailored to the customer

*In rural or urban, densely populated
or scattered, areas*

MYWATER



Confidence

in the network coverage

*Communication infrastructure always available
and ready to use nationally and internationally*



MYWATER

✓ **Easy installation**
Plug & Play



MYWATER



Specialized and dedicated teams

*Equipment Manufacturers
and Telecommunications Operators*



MYWATER

Radio Sensor for
LPWA Connectivity






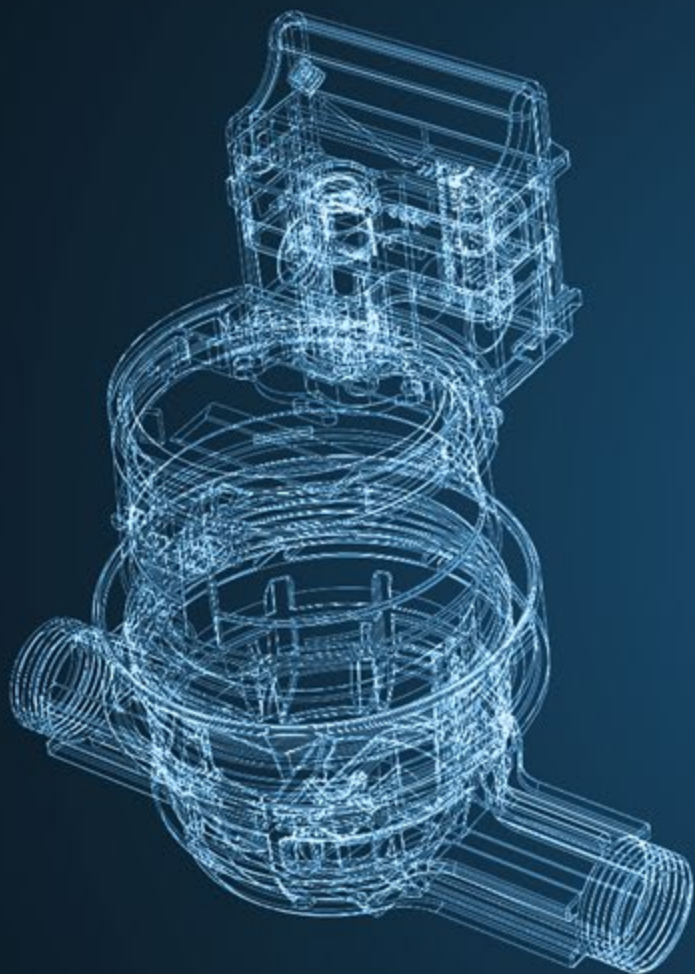
Solution

MODERN AND INNOVATIVE

MYWATER

- Technology agnostic  **LoRa** **NB-IoT**
- End of private networks and proprietary systems
- Simple and efficient in urban as well as in rural settings
- Easily scalable and modular
- Remote bi-directional management up to the reading point

 **JANZ**



MYWATER

Architecture

SIMPLE AND SCALABLE



Water Meter

Any measurement technology



MyWater Module

Coupled directly to the meter to allow the registering of impulses (in JANZ meters up to DN50) through an external module for any brand.



LPWA Network

*Allows gathering data (readings and alarms) directly from the various modules.
Allows remote configuration of each reading point*



Web Application

The data is sent to the server and presented to the user via Web application or integrated directly into the management/ invoicing system through API



MYWATER

Performance

EXCELLENT AND ROBUST



- 2 Profile Types:
 - Standard: 1h/1h Reading » 1 sending/ day
 - Extreme: 15/15 min Reading » 4 sendings/ day
- "Class 0" sensivity certification
- Its technology allows it to manage up to 96 daily readings
- Equipped with RTC (Real Time Clock)

 **JANZ**

MYWATER

Alarms

- 📍 Leak: 1 to 255 hours » configurable
- 📍 Reverse Flow: 1 to 255 impulses » configurable
- 📍 Stopped Meter: 1 to 255 days » configurable
- 📍 Under and Over consumption: flows » configurable
- 📍 Fraud
- 📍 Battery Status:

Standard Profile: 12 to 15 years

Extreme Profile: 15/15 min Reading » 4 sendings/ day





MYWATER

Software

Mywater's application sw presents a range of descriptive, predictive and prescriptive analytics for processing IoT data

Descriptive analytics

Extracts insights from the past to explain "what has happened."

Predictive analysis

Uses statistical models and forecasting techniques to predict "what could happen."

Prescriptive analytics

Uses optimization and simulation algorithms to plot possible outcomes and offer advice on "what you should do."





MYWATER

is a unique
off-the-shelf
solution

enabling Water Utilities
to deploy and manage
Radio Water Meters
and networks





DO YOU NEED IT? ARE YOU ASKING?

This is not just a question of changing skillset. It is a changing of mindset

