

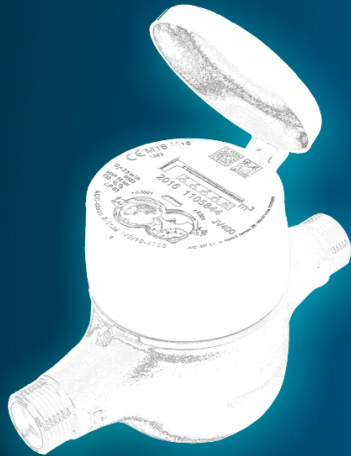




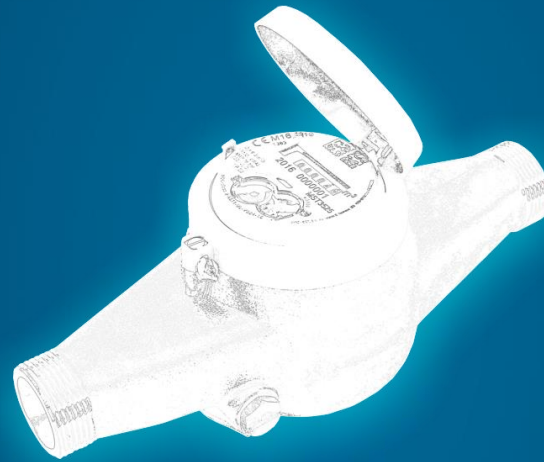
PRODUCT PORTFOLIO



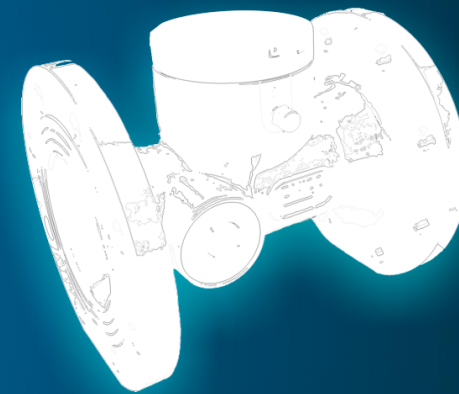
TECHNOLOGY



**DOMESTIC**



**COMMERCIAL**



**INDUSTRIAL**





**JV400**

VOLUMETRIC

DN15 to DN20



**JV600**

VOLUMETRIC

DN15 to DN25



**JM300**

SINGLE-JET

DN15 to DN20



**COMBI**

SINGLE-JET

DN15 to DN20



**JT200**

MULTI-JET

DN15 to DN20



DN15 to DN20  
Q3=2,5 to Q3=4 m³/h  
R800  
T50  
MAP 16

# JV400

DOMESTIC / VOLUMETRIC

JV400 was developed to accomplish the highest performance standards. His great design and engineering along with highly detailed raw materials selection criteria guarantees.

## JV400 Offers:

Extended curve error accuracy.

Exactness from flowrates under the minimum standardized up to the maximum flowrate.

Materials consciously selected to be resitant to corrosion and hydrolysis

Chock resistant thermoplastic components that can be safely submitted to temperatures up to 50°C

IoT Ready. JV400 has inductive pulse output. That can be equipped with any pulse sensor (ex. Janz JI for direct coupling) or LPWA sensors such as MyWater.



UK



PT



SP



PRODUCT PORTFOLIO/DOMESTIC /JV400

DN15 to DN20  
Q3=2,5 to Q3=4 m<sup>3</sup>/h  
R800  
T50  
MAP 16

# JV600

## DOMESTIC / VOLUMETRIC

JV600 was developed to accomplish the highest performance standards. His great design and engineering along with highly detailed raw materials selection criteria guarantees the ideal compromise between sensibility and durability.

### JV600 Offers:

- Extended curve error accuracy;
- Exactness from flowrates under the minimum standardized up to the maximum flowrate
- Materials consciously selected to be resistant to corrosion and hydrolysis
- Composite body with absolute stability to pressure, torsion, compression and temperature
- An effective protection against external influences and a low noise level
- IoT Ready. JV400 has inductive pulse output. That can be equipped with any pulse sensor (ex. Janz JI for direct coupling) or LPWA sensors such as MyWater.



UK



PT



SP



PRODUCT PORTFOLIO/DOMESTIC /JV600





DN15 to DN20  
Q3=2,5 to Q3=4 m³/h  
R200  
T50  
MAP 16



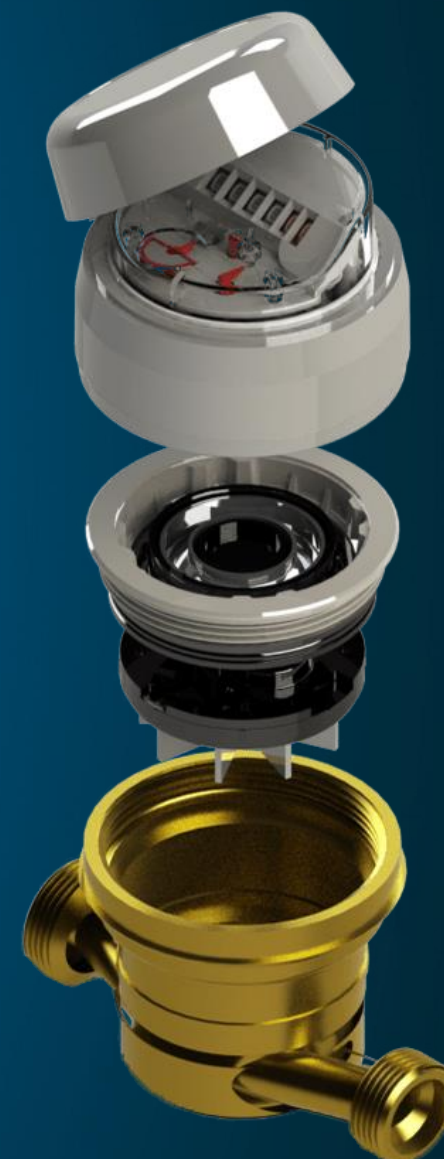
# JM300

## DOMESTIC / SINGLE-JET

JM300 was developed to accomplish the highest performance standards. His great design and engineering along with highly detailed raw materials selection criteria guarantees

### JM300 Offers:

An excellent precision curve both in low and in high flows  
High precision components and an easy reading in a robust body  
Materials consciously selected to be resistant to corrosion and hydrolysis  
IoT Ready. JV400 has inductive pulse output. That can be equipped with any pulse sensor (ex. Janz JI for direct coupling) or LPWA sensors such as MyWater.



UK



PT



SP



PRODUCT PORTFOLIO/DOMESTIC /JM300

DN15 to DN20  
Q3=2,5 to Q3=4 m³/h  
R125  
T50  
MAP 16

# COMBI

## DOMESTIC / SINGLE-JET

COMBI was developed to accomplish the highest performance standards. His great design and engineering along with highly detailed raw materials selection criteria guarantees the ideal compromise between sensibility and durability.

### COMBI Offers:

An accurate reading due to the magnetic transmission being independent of water pressure.

Tamper proof. The regulation system is hidden under the roller counter until this is not reachable from outside.

Materials consciously selected to be resistant to corrosion and hydrolysis  
IoT Ready. JV400 has inductive pulse output. That can be equipped with any pulse sensor (ex. Janz JI for direct coupling) or LPWA sensors such as MyWater.



UK



PT



SP



PRODUCT PORTFOLIO/DOMESTIC /COMBI





DN15 to DN20  
Q3=2,5 to Q3=4 m<sup>3</sup>/h  
R80  
T50  
MAP 16

# JT200

## DOMESTIC / MULTI-JET

JT200 was developed to accomplish the highest performance standards. His great design and engineering along with highly detailed raw materials selection criteria guarantees the ideal compromise between sensibility and durability.

### JT200 OFFERS:

Excellent performance in domestic volumes specially those where plumbing presents deterioration or water has solid suspension particles;  
Materials consciously selected to be resistant to corrosion and hydrolysis;  
A filter positioned in the inlet allows as easy cleaning minimizing maintenance costs and the preservation of the metal seal;  
IoT Ready. JT200 has inductive pulse output. That can be equipped with any pulse sensor (ex. Janz JI for direct coupling) or LPWA sensors such as MyWater



UK



PT



SP



PRODUCT PORTFOLIO/DOMESTIC /JT200





**JV400**  
VOLUMETRIC  
DN25 to DN40



**JV600**  
VOLUMETRIC  
DN25



**MST**  
MULTI-JET  
DN25 to DN50



DN25 to DN40  
Q3=6,3 to Q3=16m³/h  
Até R800  
T50  
MAP 16

# JV400

COMMERCIAL / VOLUMETRIC

JV400 was developed to accomplish the highest performance standards. His great design and engineering along with highly detailed raw materials selection criteria guarantees the ideal compromise between sensibility and durability.

## JV400 OFFERS:

Extended curve error accuracy:

Exactness from flowrates under the minimum standardized up to the maximum flowrate

Materials consciously selected to be resistant to corrosion and hydrolysis

Chock resistant thermoplastic components that can be safely submitted to temperatures up to 50°C

IoT Ready. JV400 has inductive pulse output. That can be equipped with any pulse sensor (ex. Janz JI for direct coupling) or LPWA sensors such as MyWater.



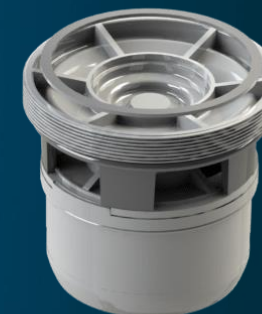
UK



PT



SP



PRODUCT PORTFOLIO/ COMMERCIAL/ **JV400**

DN25  
Q3=6,3m³/h  
R800  
T50  
MAP 16

# JV600

COMMERCIAL / VOLUMETRIC

JV600 was developed to accomplish the highest performance standards. His great design and engineering along with highly detailed raw materials selection criteria guarantees.

JV600 Offers:

- Extended curve error accuracy;
- Exactness from flowrates under the minimum standardized up to the maximum flowrate;
- Materials consciously selected to be resistant to corrosion and hydrolysis;
- Composite body with absolute stability to pressure, torsion, compression and temperature;
- An effective protection against external influences and a low noise level;
- IoT Ready. JV600 has inductive pulse output. That can be equipped with any pulse sensor (ex. Janz JI for direct coupling) or LPWA sensors such as MyWater



UK



PT



SP



PRODUCT PORTFOLIO/ COMMERCIAL/ JV400



DN25 to DN40  
Q3=6,3 to Q3=16 m<sup>3</sup>/h  
R100  
T50  
MAP 16

# MST

COMMERCIAL / MULTI-JET

MST was developed to accomplish the highest performance standard; His great design and engineering along with highly detailed raw materials selection criteria guarantees the ideal compromise between sensibility and durability.

## MST OFFERS:

Excellent performance in domestic volumes specially those where plumbing presents deterioration or water has solid suspension particles;  
Materials consciously selected to be resistant to corrosion and hydrolysis;  
A filter positioned in the inlet allows as easy cleaning minimizing maintenance costs and the preservation of the metal seal;  
IoT Ready. MST has inductive pulse output. That can be equipped with any pulse sensor (ex. Janz JI for direct coupling) or LPWA sensors such as MyWater



UK



PT



SP



PRODUCT PORTFOLIO/ COMMERCIAL/ **JV400**





# JU500

ULTRA-SONIC

DN50 to DN150



PRODUCT PORTFOLIO/INDUSTRIAL

DN50 to DN200  
Q3=40 to Q3=400m³/h  
R500  
T50  
MAP 16

# JU500

COMMERCIAL / ULTRA-SONIC

Janz ultra-sonic meter JU500 has for (4) transducers inside the pipe placed face-to-face in each one of the two parallel cannels of the equipment.

## JU500 OFFERS:

An accurate and reliable measurement ideal to control efficiency in large potable water networks;

His robust design along with the absence of internal moving parts makes JU500 the perfect equipment to resist the most challenging working conditions maintaining high standards of accuracy measurement and low maintenance costs during his lifetime;

JU500 can be equipped with state of the art communication interfaces easily allowing utilities to create smart control systems for their water distribution networks.



UK



PT



SP



PRODUCT PORTFOLIO/INDUSTRIAL/ **JU500**





## SENSING

# JI

INDUCTIVE PULSE SENSOR



## TELEMETRY» RADIO

# MYWATER

RADIO SENSOR FOR LPWA CONECTIVITY



TECHNOLOGY

# JI

## TECHNOLOGY



COMPATIBLE WITH ALL JANZ  
METERS INDUCTIVE PULSE  
TECHNOLOGY  
1 L = 1 PULSE

JI Offers:  
Possibility of using multiple adapters » Compatible with all Janz counters;  
Adaptable to dataloggers or any kind of device with a digital "open collector" output able to work with the systems described in this datasheet;

JI is able to detect flow direction which ensures a perfect synchronism between conventional mechanical reading and data transmitted by remote reading systems;

Inductive pulse technology immune to external interference.



UK



PT



SP



TECHNOLOGY/ JI

LPWA CONECTIVITY  
LOW POWER  
WIDE AREA  
Up to 15 years lifetime  
96 Daily Readings  
Plug & Play

# MYWATER

TECHNOLOGY  
RADIO SENSOR FOR LPWA CONECTIVITY

## INNOVATION

MyWater brings a definitive separation between the reading and the communication infrastructure that supports them, guaranteeing the separation of competencies between the equipment and the communication. This innovative Telemetry solution developed by Janz allows the integration of water meters in Smart City projects in a easy and efficient way;

## INSTALLATION

Plug & Play – easier than installing a meter and executable by the same teams;

## SCALABILITY

Tailored to the costumer – in rural or urban areas, densely populated or scattered. With LPWA network points as the costumer wishes without the need of creating additional network infrastructures;

## SPECIALIZATION

Tailored to the costumer – in rural or urban areas, densely populated or scattered. With LPWA network points as the costumer wishes without the need of creating additional network infrastructures;



TECHNOLOGY/ MYWATER



UK



PT



SP



# THANK YOU

 [WWW.CGF.JANZ.PT](http://WWW.CGF.JANZ.PT)